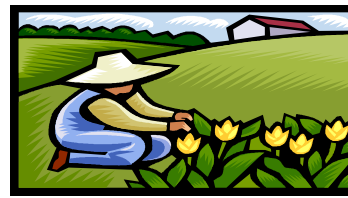


MAY INFORMER



| | |
|---------------------------|---|
| SATURDAY | 1 |
| 9:00 Boot Camp | |
| 11:00 Bistro Closed | |
| 12:00 Pool & Shuffleboard | |
| 12:15 Fun Darts | |
| 1:00 Cribbage (Library) | |

| SUN | MONDAY 3 | TUESDAY 4 | WEDNESDAY 5 | THURSDAY 6 | FRIDAY 7 | SATURDAY 8 |
|----------------------------|--|---|---|--|--|--|
| C L O S E D | 8:30 Wood Shop Opens 9:00 Bistro Open 10:00 Crossiron Mills 10:30 Gentle Yoga 11:00 Gentle Fitness 11:00 Next to New Open | 8:30 Wood Shop Opens 9:00 Bistro Opens 10:30 Adult Day Prog. 10:00 AGM 10:30 Next to New 12:00 Senior Sports 12:30 Barbershoppers | 8:30 Wood Shop Opens 9:00 Bistro Opens 10:00 Next To New Opens 10:30 Balance For Life 11:30 Lunch with Friends 12:30 Fun Darts 12:30 CARA | 8:30 Wood Shop Opens 9:00 Bistro Opens 10:30 Next To New Opens 10:30 Spinz Around 12:00 Senior Sports | 8:30 Wood Shop Opens 9:00 Bistro Opens 10:00 Walking 10:30 Next To New Opens 11:30 - 12:30 Mary Kay 12:00 Bingo 1:45 Nut Man | 9:00 Boot Camp 11:00 Bistro Opens 12:00 Pool & Shuffleboard 12:15 Fun Darts 1:00 Cribbage (Library) |
| 9 | 10 | 11 | 12 | 13 | 14 | 15 |
| C L O S E D | 8:30 Wood Shop Opens 9:00 Bistro Open 10:30 Gentle Yoga 11:00 Gentle Fitness 11:00 Next to New Open | 8:30 Wood Shop Opens 9:00 Bistro Opens 10:30 Adult Day Prog. 10:30 Next to New 12:00 Senior Sports 12:30 Barbershoppers | 8:30 Wood Shop Opens 9:00 Bistro Opens 10:00 Next To New Opens 10:30 Balance For Life 12:15 Fun Darts | 8:30 Wood Shop Opens 9:00 Bistro Opens 10:30 Next To New Opens 10:00 5 Star Bingo 10:00 Deerfoot Inn Casino 10:30 Spinz Around 12:00 Senior Sports 1:00 Coffee and Conversation | 8:30 Wood Shop Opens 9:00 Bistro Opens 10:00 Walking 10:30 Next To New Opens 11:30 - 12:30 Mary Kay 12:00 Bingo | 9:00 Boot Camp 11:00 Bistro Opens 12:00 Pool & Shuffleboard 12:15 Fun Darts 1:00 Cribbage (Library) 5:00pm to 12:00am Farewell Party for Lorrie and Michele |
| 16 | 17 | 18 | 19 | 20 | 21 | 22 |
| C L O S E D | 8:30 Wood Shop Opens 9:00 Bistro Open 10:30 Gentle Yoga 11:00 Gentle Fitness 11:00 Next to New Open | 8:30 Wood Shop Opens 9:00 Bistro Opens 10:30 Adult Day Prog. Deerfoot Inn Casino 10:30 Next to New 12:00 Senior Sports 12:30 Barbershoppers | 8:30 Wood Shop Opens 9:00 Bistro Opens 10:00 Next To New Opens 10:30 Balance For Life 12:15 Fun Darts | 8:30 Wood Shop Opens 9:00 Bistro Opens 10:30 Next To New Opens 10:30 Spinz Around 12:00 Senior Sports | 8:30 Wood Shop Opens 9:00 Bistro Opens 10:00 Walking 10:30 Next To New Opens 11:30 - 12:30 Mary Kay 12:00 Bingo 1:45 Nut Man | 9:00 Boot Camp 11:00 Bistro Opens 12:00 Pool & Shuffleboard 12:15 Fun Darts 1:00 Cribbage (Library) |
| 23 | 24 | 25 | 26 | 27 | 28 | 29 |
| C L O S E D | S T A T VICTORIA DAY BUILDING CLOSED | 8:30 Wood Shop Opens 9:00 Bistro Opens 10:30 Adult Day Prog. 10:30 Next to New 12:00 Senior Sports 12:30 Barbershoppers | 8:30 Wood Shop Opens 9:00 Bistro Opens 10:00 Next To New Opens 10:30 Balance For Life 12:15 Fun Darts | 8:30 Wood Shop Opens 9:00 Bistro Opens 10:30 Next To New Opens 10:30 Spinz Around 12:00 Senior Sports | 8:30 Wood Shop Opens 9:00 Bistro Opens 10:00 Walking 10:30 Next To New Opens 11:30 - 12:30 Mary Kay 12:00 Bingo | 9:00 Boot Camp 10:00-3:00pm Garage Sale 11:00 Bistro Opens 12:00 Pool & Shuffleboard 12:15 Fun Darts 1:00 Cribbage (Library) |
| 30 | 31 | | | | | |

| |
|---|
| 8:30 Wood Shop Opens 9:00 Bistro Open 10:30 Gentle Yoga 11:00 Gentle Fitness 11:00 Next to New Open |
|---|



Please Note: Some of these activities function only when volunteers are available.